

# ELI Weekly

## Murphy's Law

Murphy's Law is commonly expressed as "If anything can go wrong, it will go wrong." Many problems, failures, and annoyances are attributed to Murphy's Law, but most people do not know where the name came from.

Murphy's Law is usually thought to be named after Captain Edward Murphy, a development engineer with the United States Air Force. In the 1940s and 1950s, he was working with acceleration and deceleration experiments at Edwards Air Force Base. Murphy's Law most likely originated during his projects with Dr. John Paul Stapp.



Dr. John Paul Stapp designed experiments around gravity forces, or G-forces to see how much sudden deceleration a person can stand in a crash. He rode on a rocket-powered sled that accelerated to over 630 miles per hour (over 1000 km per hour). The G-forces were extreme and unpleasant, but even worse was the fact that all the sensors malfunctioned. When Stapp got off the sled, every sensor read "zero."

Captain Murphy checked the sensors and learned that every single sensor had been installed the wrong way. He commented that if people had options about how to do something, with one of those options resulting in catastrophe, people will always pick the option that has a catastrophic outcome.

Murphy's Law is one good reason why engineers always test, test, and test everything. They need to imagine every possible disastrous outcome in order for these outcomes not to be realized. Using Murphy's Law when designing new technology is also called "defensive design," or "Murphy Proofing." Designers need to take into account all the possibilities that a user will mess up, and somehow make them impossible or at least incapable of causing harm.

Many variants of Murphy's Law exist in today's culture. It is generally accepted, for example, that bread will always land jelly side down when dropped, that there will be rain as soon as you wash your car, and that you will always pick the line in the supermarket that doesn't seem to advance at all. People have even been known to try to use Murphy's Law to their advantage, for example, washing cars in order to bring rain.

For more information, visit to: <http://www.murphys-laws.com/>

## Free Students Activities on Campus

- SAC Presents: Open Mic Night

Students are encouraged to come to the Level 1 Game Center to perform for an open mic night! Musicians, comedians, actors are all welcome, performers may prepare up to 2 songs or 10 minutes worth of material. The best performer of the night will have a chance to open for one of SAC's Friday Night Concerts.

- Date and Time: Monday, April 06, 5 P.M. - 9 P.M.
- Location: PSU Level 1 Game Center

- Missouri State University Symphony Orchestra

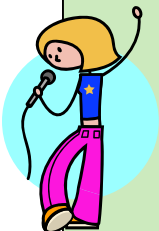
The Music Department presents the Concerto Honors Concert.

The Missouri State Symphony performs and accompanies student winners of the annual Concerto Competition.

- Date and Time: Tuesday, April 07, 7:30 P.M.
- Location: Hammons Hall for the Performing Arts, Juanita K.

For more events and activities, visit: <http://calendar.missouristate.edu/>

Also, ALWAYS check [the Student Activities Board](#) across from the 2<sup>nd</sup> floor Computer Lab!



April 6, 2009

## Announcements

- **ELI Newsletters in Balck & White!**  
- You can still read/print the color version online at: <http://morriscenter.missouristate.edu/eli/newsletter.htm>
- **Spring Holidays**—No Classes!  
Thursday, 4/9 & Friday, 4/10  
No Plan? Check the Camping Trip
- **Attention On-Campus Students!!!**
  1. Checking out of your residence hall room is an important process. you must leave your room/suite/apartment reasonably clean, free of damage, and in proper order.
  2. All residence halls will close at 8:00 a.m. on Saturday, May 16, 2009. Students should make prior travel arrangements to ensure a smooth closing of the residence halls.
  3. Students enrolled in a summer class who would like to live on campus should come to the Residence Life Office in Hammons House 104 to complete a Summer Housing Contract.

For more detailed information, visit to:  
Department of Residence Life  
and Services: <http://reslife.missouristate.edu>



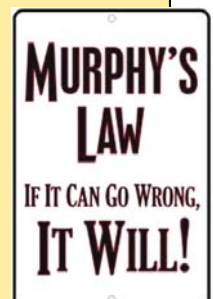
## Camping Trip to Busiek State Forest

- Departure: Thursday, 4/9 at ELI at 3pm
- Fee: \$5 for food will be paid to Ian
- Need to sign up with Ian or Phil by Wednesday, 4/8. The first 12 students to sign up can have a free sleeping bag.
- Student can rent sleeping bags at Campus Recreation on the 1st floor of PSU or buy one at Bass Pro or Wal-Mart for cheap.
- For more information, please ask Ian or Phil !!!



## Murphy's Laws

- **Murphy's love laws**
  1. All the good ones are taken.
  2. If the person isn't taken, there's a reason.
  3. The nicer someone is, the farther away (s)he is from you.
- **Murphy's bus laws**
  1. If its raining, or cold or both the bus will be late.
  2. If you're running late, the bus will be too.
  3. The other people at the bus stop are waiting for the bus that has just pulled in.
- **Murphy's lotto laws**
  1. You match 4 numbers, but you lost your ticket.
  2. Your spouse wins, then leaves you.
  3. You finally hit it big, then you find out all the friends you never had.
- **More Laws**
  1. You will always find something in the last place you look.
  2. The other line always moves faster.
  3. In order to get a personal loan, you must first prove you don't need it.



## Weather Forecast

### Forecast for April. 6 — April. 12

<b>Monday:</b>	Windy	41/29
<b>Tuesday:</b>	Mostly Sunny	53/32
<b>Wednesday:</b>	Mostly Cloudy	63/50
<b>Thursday:</b>	Few Showers	60/42
<b>Friday:</b>	Partly Cloudy	61/42
<b>Saturday:</b>	Sunny	64/44
<b>Sunday:</b>	Showers	67/47

Weather forecasts are **always** changing, so for the most up-to-date forecast, go to: [www.weather.com](http://www.weather.com), or watch the local news or the weather channel.