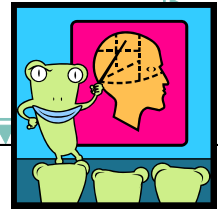




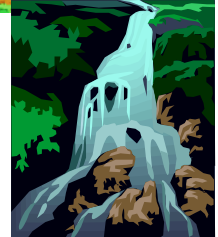
# ELI Weekly



## Reflection of Life - Imagine Yourself in a Forest or Jungle ...

Since a lot of students enjoyed the Love Test two weeks ago, I prepare another psychology test for you. This test attempts to analyze your personality by interpreting your reactions to various situations. Please write down your answers and then check the back page to see what each question means.

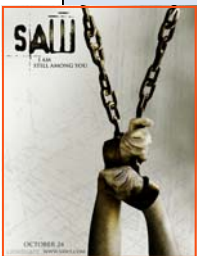
- Imagine yourself in a forest or a jungle
  1. **What is the first animal you see?**
  2. **What is the second animal you see?**
- Imagine now there is a hut in front of you....
  3. **Do you :**
    - a. Pass it
    - b. Knock before going in
    - c. Rush in
- Now imagine yourself in the hut.
  4. **There are twenty candles in it, how many will you light up?**
  5. **You see a table inside? Is it square or round?**
  6. **How many chairs do you see around the table?**
  7. **There is a jug on the table. What material is the jug made of?**
  8. **How much water is inside the jug?**
    - a. No water
    - b. Half full
    - c. Three quarters full
    - d. Totally full
- You have stepped out of the hut and you start walking
  9. **You reach a beautiful waterfall. How fast is the waterfall?**  
(from one to nine, one is the slowest and nine is the fastest)
  10. **How many swans are there near the waterfall?**
  11. **Now you have reached the river bank and your destination is just opposite. How do you cross over?**
    - a. Jump into the river and swim across.
    - b. Find another way to cross



**Check the back page for analysis**

For more psychological tests, visit to: <http://www.personalityquiz.net/index.htm>

## Free Students Activities on Campus



- **Saw 5**  
SAC Films presents "Saw 5" as part of the weekly film series. Admission is free and priority seating will be given to MSU students with valid student ID.
  - **Date and Time:** Wednesday, 2/18, 9 p.m. - 11 p.m.
  - **Location:** PSU Theater

- **The Election of Barack Obama: What Does It Mean? (Student Panel Discussion)**

The African American Studies Program will host a student panel discussion.

The entire community is welcome to attend.

- **Date and Time:** Thursday, 2/19, 8 p.m. - 9:30 p.m.

- **Location:** Glass Hall 108

For more events and activities, visit: <http://calendar.missouristate.edu/>

Also, ALWAYS check [the Student Activities Board](#) across from the 2<sup>nd</sup> floor Computer Lab!



## Announcements

- VERY IMPORTANT !!!!!**

If you arrive in the United States before January 1, 2009, you need to file a tax form. There will be workshops to help you determine what form you need to file **starting February 17, 2009** at the English Language Institute. Before you go to workshop, you need to sign up a sheet in Glass Hall Room 439 **starting February 10, 2009**. For more detail information, please check the Student Activities Board. If you have any question, you're welcome to come to the office to ask.



- If you have a **new address or social security number**, please come to the office to let us know.

## Analysis

- This question symbolizes the "reflection of your life".
- This question symbolizes the "character of your life partner".
- Walking past means that you are not ready for relationships.
  - Knocking before entering means that you are ready for relationships.
  - Rushing in means that you are desperate
- This question is about your generosity. The more you light up, the more generous you are.
- A square table means that you are stubborn, a round table means that you are flexible.
- This actually shows your hospitality. The more the better!
- This refers to the material of your heart
- This refers to the amount of love that you will give to your partner
- The speed refers to your sex drive
- The number of swans symbolizes the number of best friends you have.
- This means that you act without thinking.
  - This means that you think before you act.

## Academic Lecture

- Levels: **3 & 5**
- Date & Time: **Wednesday, February 18**
- Topic: **Volunteering in America**
- Speaker: **Beverly Miller**  
(Department: Red Cross)
- Location: **Room 401**



## Fun Facts



- Elephants are the only animals that can't jump.



- Fingernails grow nearly 4 times faster than toenails!

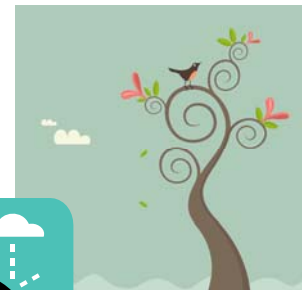
- House flies have a lifespan of two weeks.



## Weather Forecast

Forecast for February. 16— February. 22

		Fahrenheit (High/Low)
<b>Monday:</b>	Partly Cloudy	44/30
<b>Tuesday:</b>	Showers	51/38
<b>Wednesday:</b>	Partly Cloudy	46/26
<b>Thursday:</b>	Mostly Sunny	42/26
<b>Friday:</b>	Sunny	44/32
<b>Saturday:</b>	Sunny	50/37
<b>Sunday:</b>	Showers	49/32



Weather forecasts are **always** changing, so for the most up-to-date forecast, go to: [www.weather.com](http://www.weather.com), or watch the local news or the weather channel.