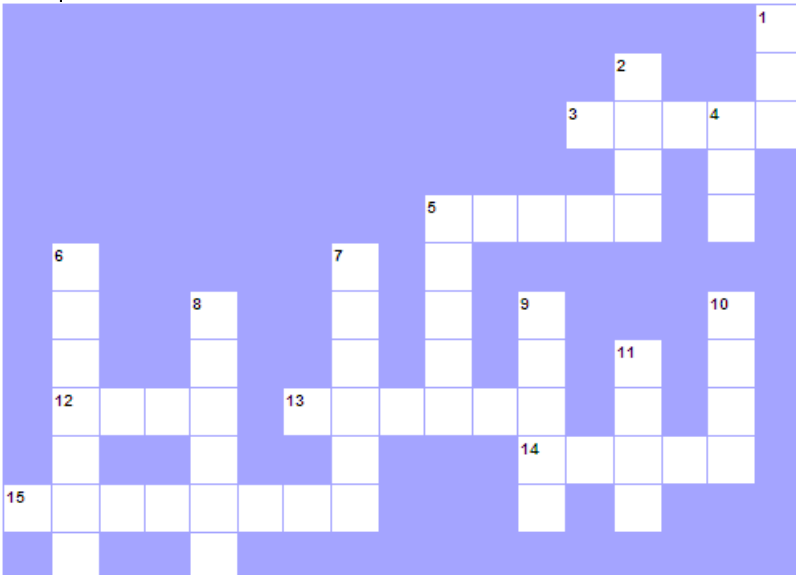


February 23, 2009

ELI Weekly

Crossword Game - Fill in crosswords



DOWN:

1. Water which has frozen and become solid.
2. To have strong feelings of affection for another.
4. To pronounce words or sounds.
5. The direction which goes towards the part of the Earth below the equator.
6. The space which separates two places, people or objects.
7. Another word for in front of:
8. A male parent.
9. The direction which goes towards the part of the Earth above the equator.
10. A large enclosed area of grassy land that children can play in.
11. To heat a liquid until it starts to turn into a gas.

ACROSS:

3. A building in which people, usually one family, live.
5. A country or its government.
12. The past tense of 'go'.
13. A female parent.
14. To believe something or have an opinion or idea.
15. A group of words that form a statement, question, instruction or exclamation and starts with a capital letter when written.

Prizes!!!



Surprise prizes are waiting for the first five students who fill out all the answers correctly. Just bring it to the office and check your answers. You better hurry!!! You could be one of the five.

Free Students Activities on Campus

• High School Musical 3

SAC films presents "High School Musical 3" as part of the weekly film series. Admission is free. Priority seating will be given to MSU students with valid student ID.

- Date and Time: **Wednesday, 2/25, 9 p.m. - 11 p.m.**
- Location: **PSU Theater**



• Rock n' Bowl

SAC presents Rock n' Bowl. Free Bowling, Billiards, and so much more. Event is free to Missouri State Students with valid MSU ID.

- Date and Time: **Friday, 2/27, 7:30 p.m. - 10:30 p.m.**
- Location: **Glass Hall 108**



For more events and activities, visit: <http://calendar.missouristate.edu/>
Also, ALWAYS check [the Student Activities Board](#) across from the 2nd floor Computer Lab!

This is **NOT** a crossword game !!!

Announcements



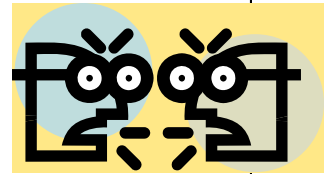
Tax Seminars

If you arrive in the United States before January 1, 2009, you need to file a tax form. There will be workshops to help you determine what form you need to file at the English Language Institute. Before you go to workshop, you need to sign up a sheet in Glass Hall Room 439. For more detail information, please check the Student Activities Board. If you have any question, you're welcome to come to the office to ask.

- The next week is **Midterm Week!**

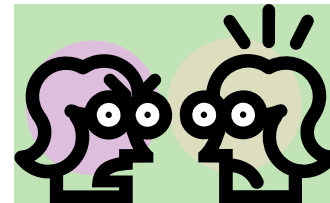


Weekly English Expression A Cross Word!



- A:** How long have your grandparents been married?
- B:** They'll be celebrating their golden wedding in two months' time.
- A:** Fifty years! Goodness, that's a really long time.
- B:** Yes, they were actually childhood sweethearts.
- A:** And they still seem a very happy couple.
- B:** Oh they are. My grandmother always says that there never has been ***a cross word between them.**
- A:** They've never had a cross word? That must ne some kind of record.

* **A cross word** - a Having an argument with someone



Academic Lecture

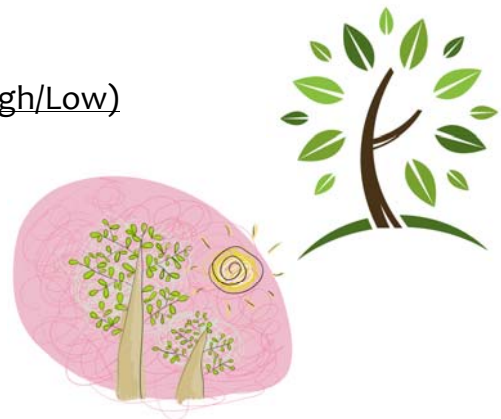
- Levels: 5
- Date & Time: **Wednesday, February 25**
- Speaker: **Luis Lombilla** (Department: **Spanish**)
- Location: **Room 410**



Weather Forecast

Forecast for February. 23— March. 1

		Fahrenheit (High/Low)
Monday:	Partly Cloudy	49/31
Tuesday:	Cloudy	50/39
Wednesday:	Showers	55/42
Thursday:	Cloudy	46/26
Friday:	Few Showers	52/36
Saturday:	Partly Cloudy	53/40
Sunday:	Mostly Cloudy	54/42



Weather forecasts are **always** changing, so for the most up-to-date forecast, go to: www.weather.com, or watch the local news or the weather channel.