

ELI Weekly

Springfield is Lots of Fun!--Part 2

Last week, you read about some of the fun things Springfield has to offer you. This week, you will find out about the wonderful outdoor Springfield. The places mentioned here are favorites of some of the ELI staff. They highly recommend that you visit these beautiful places located right here in town! It's still cold outside, but when spring comes and the weather gets warmer, you will be prepared to get outside and enjoy nature.



Crystal Cave

One place you definitely want to check out is Crystal Cave. Missouri is known as the Cave State, but you will learn all about that in a future issue. Crystal Cave is beautiful, natural, and very well-preserved. An older couple own the cave and give tours of it. They are very nice and will tell you the history of the cave along with some interesting stories. You will see cave structures such as stalactites, stalagmites, and soda-straws, and maybe even a bat or two! The cost to tour the cave is \$9.00 and it lasts about an hour and a half. It is located just outside Springfield, about 5 minutes past I-44 on Hwy. H. You should call before you go just to make sure they are open. Check out their website:

www.crystalcavemissouri.com.

If dark caves aren't your thing, you might want to check out Lake Springfield. There, you can play soccer, run, swim, have a picnic, barbeque, fly a kite, or just relax. You can even rent a canoe or a kayak. When the weather warms up, grab some friends and spend a day there. To get there, take Hwy. 65 South (towards Branson) to Evans Road and turn right.



Lake Springfield

Springfield also has some great parks to enjoy. A great one to visit is Close Park. There you can enjoy a nice, paved trail that surrounds a beautiful lake, as well as many gorgeous flower gardens. They have picnic tables too, in case you want to have a romantic picnic :) It's a very calm place where you can relax. There usually aren't very many people there at one time, so that's a definite bonus. Close Park is part of a big complex of parks located inside Nathanael Greene Park. This is where you will also find the Mizumoto Japanese Stroll Garden, which is a tranquil place of beauty. As you stroll the paths of the garden, you will see lovely plants, open green spaces, many different rocks, sculptures, a bridge, small ponds with ducks, fish, and turtles, and a tea house. This park is open from April 1-Oct. 31 and costs \$3.00 to enter. (Other parks in Nathanael Greene are free.) Nathanael Greene Park is located at 2400 S. Scenic Rd. (between Sunshine and Battlefield).



Japanese Stroll Garden

Finally, if you are an animal lover, the Dickerson Park Zoo will be your place to visit. There you can see a wide variety of animals from all over the world. It costs \$6.00 for adults and \$4.00 for children. You should definitely take ride on the train while you are there. It's only \$2.00 extra, and very relaxing. Plus, there are certain animals you can only see by riding the train.



Dickerson Park Zoo

Keep all these places in mind for spring. By then, you'll be ready to get outside!

Activities This Week

Wednesday, Jan. 30 & Sunday, Feb. 3

Movie on Campus

"Superbad"

9:00 PM at the Plaster Student Union Theater

Free with ZipCard

Friday, Feb. 1

First Friday Art Walk

Monthly event where you can enjoy art at downtown galleries during the special hours of 6-10PM. It's always popular and best of all—it's FREE!



For more events and activities, visit: <http://calendar.missouristate.edu/>

Also, ALWAYS check the Student Activities Board across from the 2nd floor Computer Lab

Announcements



• **Academic Lectures THIS week:**

Tues. (1/29): Level 5; room 410
Psychology

Wed. (1/30): Level 5; room 410
Media & Journalism

• **Attention Students:**

If you have a new address, tell Alicia in the office!

New students: If you still have not turned in your Taylor Health Center Medical History form, please do so as soon as possible!

Did You Know....



A few interesting facts about Senegal:

French is the official language in Senegal. Other languages spoken include: Wolof, Pulaar, Jola, and Mandinka.



Fruits commonly grown in Senegal are bananas, citrus fruits, guava, mangoes, papayas, and watermelon.

Senegal has 2 UNESCO World Heritage Sites: The **Niokolo-Koba National Park**, which is located along the Gambia River and includes forests, savannahs, and a lot of animals, such as antelope, chimpanzees, leopards, lions, elephants, birds, reptiles, and amphibians; and the **Djoudj National Bird Sanctuary**, a wetland which is home to around 1.5 million birds.

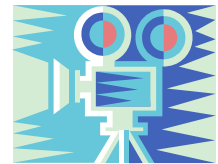


What's Showing at The Moxie?

The Moxie is downtown's independent cinema located near the corner of Walnut and Campbell.

This week:

- I'm Not There
- The Savages
- Southland Tales
- The Orphanage

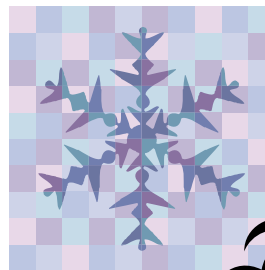


See Schedule on the Student Activities Board

Weather Forecast

Degrees: High/Low
Forecast for Jan. 28-Feb. 3

	<u>Fahrenheit</u>	<u>Celsius</u>	
Monday:	61/49	16/09	—chance of rain
Tuesday:	50/19	10/-7	—chance of snow
Wednesday:	45/27	07/-3	
Thursday:	40/24	04/-4	—chance of snow/rain
Friday:	40/26	04/-3	
Saturday:	49/23	09/-5	
Sunday:	50/29	10/-2	—chance of rain



Weather forecasts are *always* changing, so for the most up-to-date forecast, go to: www.weather.com, or watch the local news or weather channel.