

# ELI Weekly

## Wanna Go for a Stroll?

Before the end of October, there is one place in Springfield that you must visit if you want to find peace, beauty, and tranquility. I am, of course, referring to the Mizumoto Japanese Stroll Garden. It is an absolutely gorgeous gem located within the city walls of Springfield (in Nathanael Greene Park, to be precise) that must not be missed. If you have never experienced a Japanese garden before, then you will be amazed by the scenery you will encounter while walking through its curving paths.



Construction on the garden began in 1985 and the vision was for “an oasis of serenity.” The architectural techniques employed in the garden include those of typical tea gardens: stepping stones, lanterns, and a tea hut. The paths in the garden wind around ponds (where you might be lucky enough to see ducks, fish, and turtles) and islands. The garden is arranged in the “hide and reveal” concept, which allows visitors to experience each scene in the garden separately.



Something that must be in every Japanese garden—and the Springfield garden surely has it—is rock. A traditional Japanese garden can lack plants, water, and grass, but it must have rocks. Japan is very mountainous, and its people give much consideration to rocks as they are a large part of the country’s history, mythology, and topography.



An event that is coming up very soon (next weekend—Sept. 7-9!) is the annual Japanese Fall Festival. This weekend will be full of entertainment by Japanese performers and artists, food, tea Ceremonies, and hands-on activities for children. You won’t want to miss it!

The garden is located in Nathanael Green Park on Scenic Rd., between Sunshine and Battlefield. Admission is normally \$3.00 (for the Festival, it might be more) and it is open Friday through Monday, 9:00 a.m. to 7:30 p.m. Its season is April 1-Oct. 31, so HURRY and check it out before its too late!

## Activities This Week

**Friday, September 7**

**First Friday Art Walk**

This monthly event is always fun! Take advantage of the opportunity to see some local art during special evening hours in the downtown district (especially while the evenings are still nice!) Everyone else will be there, so what are you waiting for?

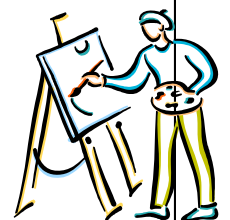
**Where:** Downtown art galleries, shops, and restaurants/café’s

**What time:** 6:00—10:00 PM

**How much:** FREE!!!

For more events and activities, visit: <http://calendar.missouristate.edu/>

**Also, ALWAYS check the Student Activities Board across from the 2<sup>nd</sup> floor Computer Lab!**



## Announcements



- **F.Y.I.** Alicia will be out of the office for the entire month of September. She is having knee replacement surgery. We wish her a speedy recovery!
- **New ELI computer lab hours:** 8:00-8:50 AM, 12:00-12:50 PM, and 3:00-5:00 PM. During class time, the lab will be closed and locked.
- If you have a **new address** or **social security number**, please come to the office to let us know.

## Did You Know....

### A few interesting facts about Peru:

The most well known Peruvian archeological site is Machu Picchu, also called the "Lost City of the Incas." The Incan Empire reached its peak in the 16th century.



The three main languages spoken in Peru are Spanish, Quechua, and Aymara, the last 2 being prominent Indian languages.

Peru has a very diverse climate, ranging from very hot and humid to extremely cold and arctic.

Over 10% of Peru's land is protected as national parks and reserves.

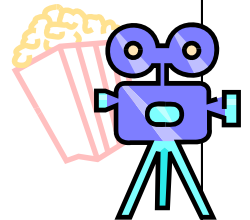


### What's Showing at The Moxie?

The Moxie is downtown's independent cinema located at the corner of Walnut and Campbell.

This week:

- Sicko
- The Ten
- No End in Sight
- SPECIAL: Meeting Resistance



**See Schedule on the Student Activities Board**

## Weather Forecast

**Degrees: High/Low**  
Forecast for September 4-9

Fahrenheit    Celsius

Monday:		
Tuesday:	86/67	30/19—chance of rain
Wednesday:	77/66	25/19—chance of rain
Thursday:	76/67	24/19—chance of rain
Friday:	79/66	26/19—chance of rain
Saturday:	73/61	23/16—chance of rain
Sunday:	74/54	23/12—chance of rain



Weather forecasts are *always* changing, so for the most up-to-date forecast, go to: [www.weather.com](http://www.weather.com), or watch the local news or the weather channel.